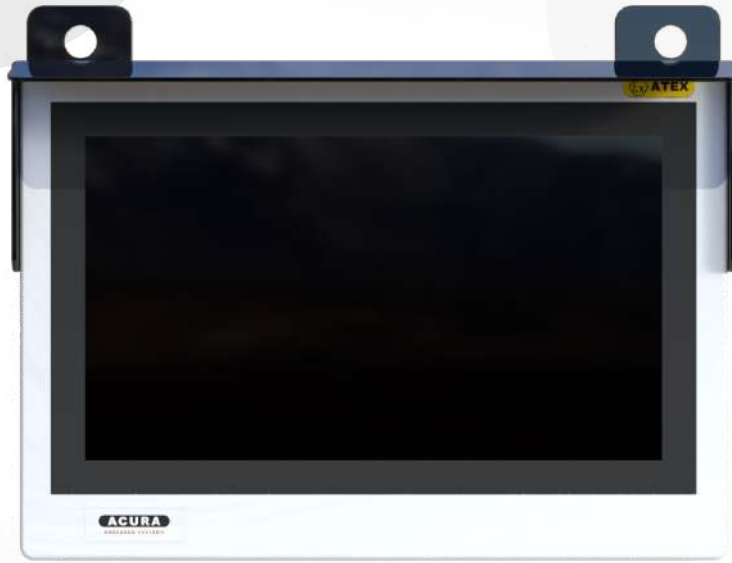
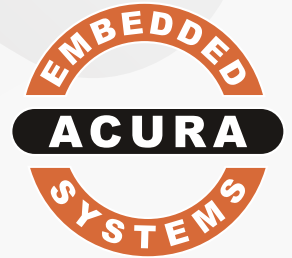


RoughNeck 15.6

Hazloc Outdoor
Panel PC



Our Customizable Flagship Fully Sealed Panel PC. Out Most Capable, High-Performance, Lightweight and Flexible.



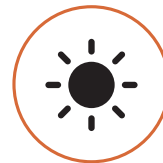
-40°C TO +60°C



LIGHTWEIGHT
AVERAGE 14 LBS



IECEX
CLASS 1 DIV 2
ATEX CERTIFIED



SUNLIGHT
READABLE



WIRELESS
CONNECTIVITY

Purpose-Built for Hazardous Locations

RoughNeck 15.6 seamlessly integrates advanced technology with unmatched rugged dependability and precision engineering, making it the perfect solution for industries such as oil and gas, mining, and manufacturing, where safety, reliability, and performance are critical for demanding operations.

Sunlight Readable Touchscreen Display

Featuring a 15.6" capacitive LCD touchscreen, it delivers precise touch functionality, even with gloves. Optimized for high visibility, this rugged display adapts seamlessly to both indoor and outdoor conditions, ensuring dependable, long-lasting performance in harsh industrial environments.

Custom Integration for Maximum Output

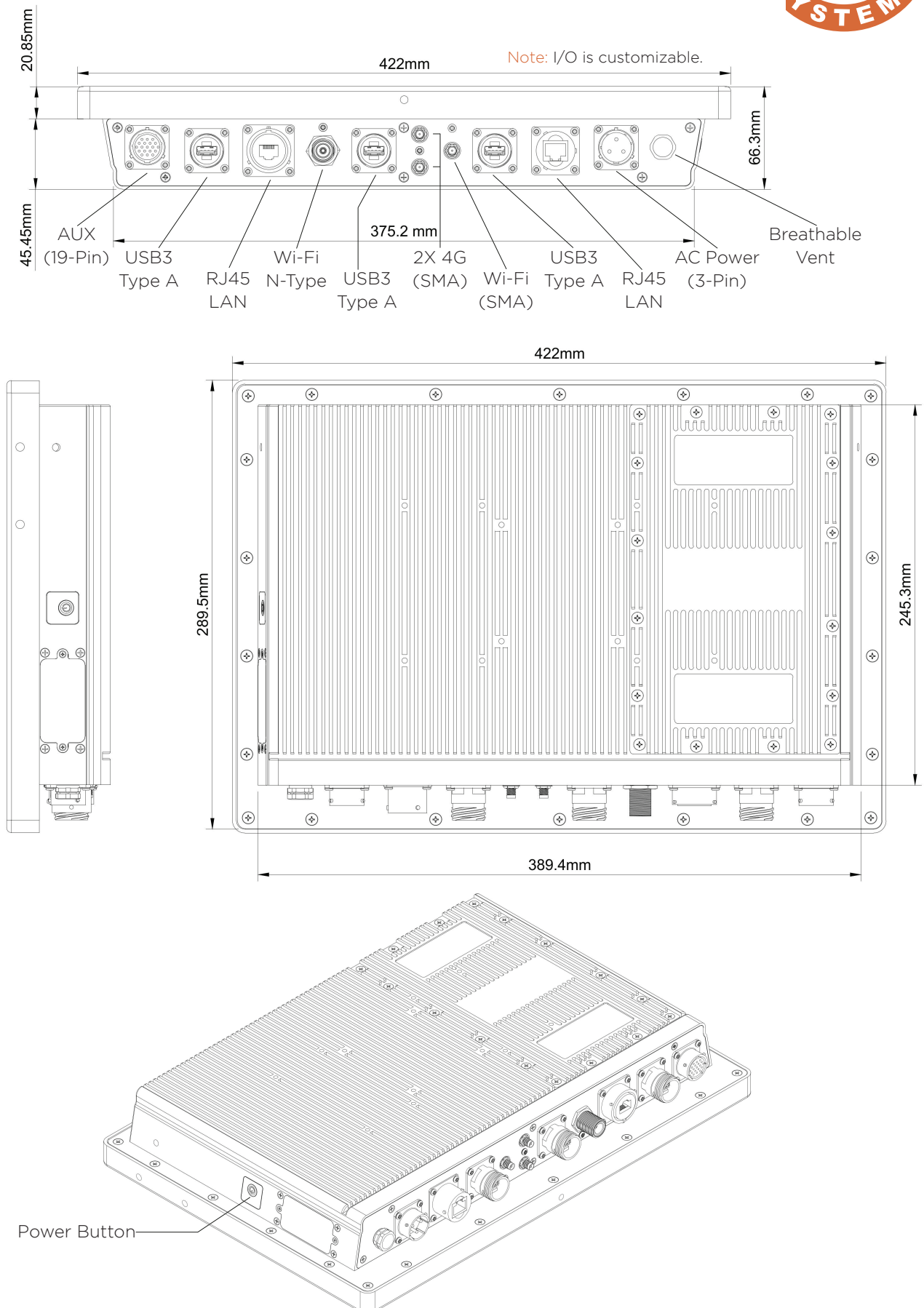
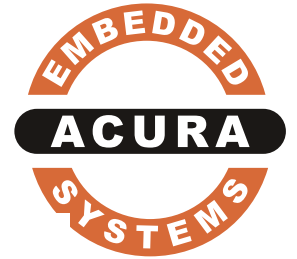
Offering custom board integration space for pressure decoders or modems, ensuring seamless performance, reliability, and adaptability in harsh environments, making it an ideal choice where custom functionality and rugged performance are required in extreme conditions.

HAZLOC CERTIFIED AND PROVEN



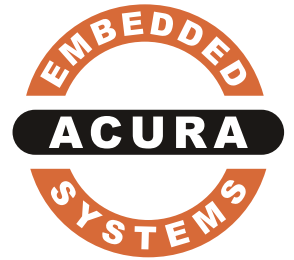
RoughNeck 15.6

Hazloc Outdoor Panel PC

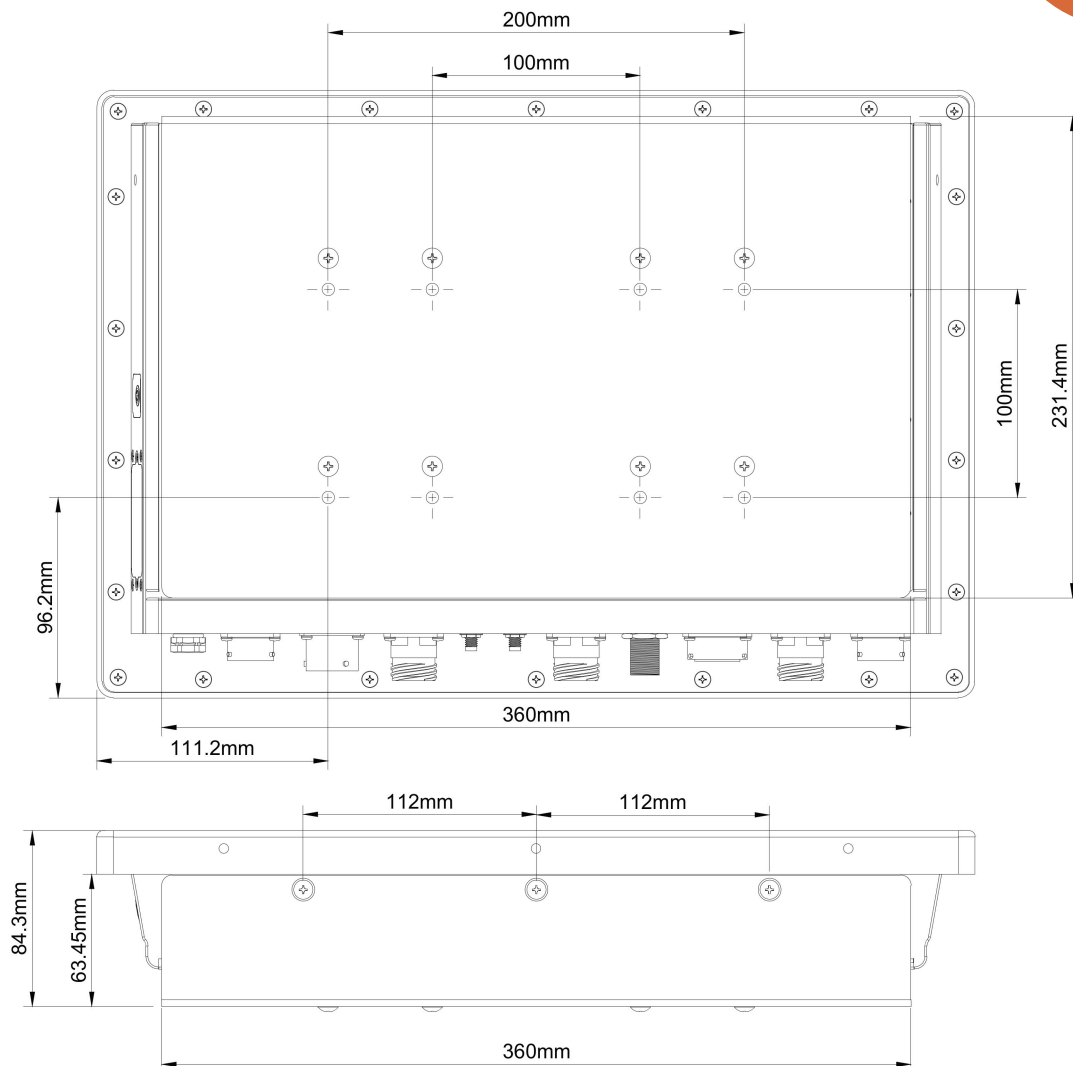


RoughNeck 15.6

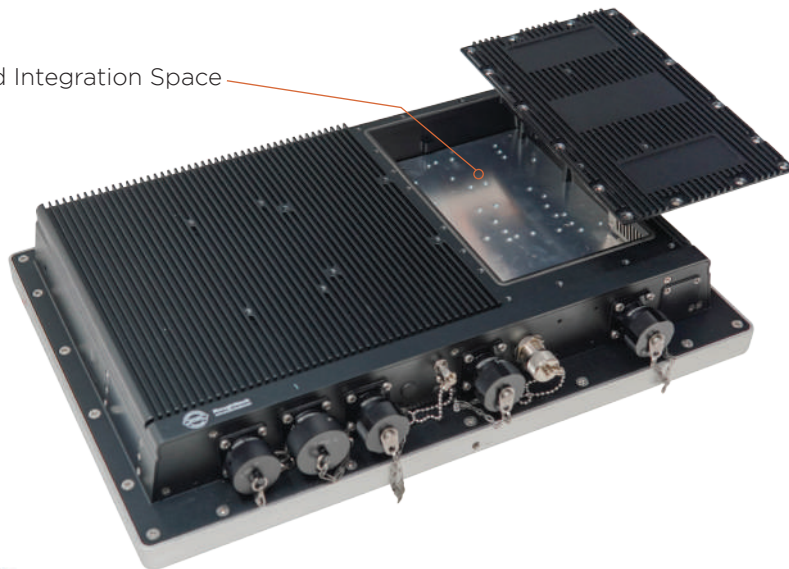
Hazloc Outdoor
Panel PC



VESA Mounting & Extension



Custom Board Integration Space



PLC Controllers



DAC Cards



MWD Decoders

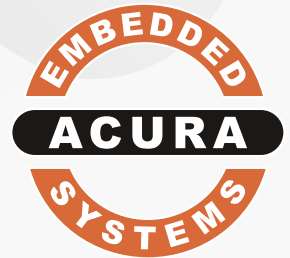


Modems

Note:
Dimensions are
in millimeters.

RoughNeck 15.6

Hazloc Outdoor
Panel PC



FULLY CUSTOMIZABLE | PRODUCT SPECIFICATIONS

SYSTEM

SCREEN SIZE	15.6" LCD (16:9)
PROCESSOR	INTEL I5 OR I7
BRIGHTNESS	1000 NITS - HIGH BRIGHT
MEMORY	UP TO 64 GB
RESOLUTION	1920X1080P (FULL HD)
TOUCH SCREEN	CAPACITIVE MULTI TOUCH
POWER INPUT	110-240V AC OR 9-36V DC
OPERATING SYSTEM	WINDOWS OR LINUX
STORAGE	SSD

I / O (CUSTOMIZABLE)

SERIAL PORT	1x RS232 OR RS485
LAN	1x RJ45 PORT GBE
VIDEO	2x HDMI
USB	3x USB
POE	OPTIONAL
WIFI	802.11 AX 6E
WIRELESS	4G/LTE/900 MHz RADIO(OPT)
CONNECTORS	INDUSTRIAL / MIL-GRADE

ENVIRONMENTAL

OPERATING TEMP	-40°C TO 60°C (-40°F TO 140°F)
STORAGE TEMP	-40°C TO 60°C (-40°F TO 140°F)
RELATIVE HUMIDITY	<96% (NON CONDENSING)
CERTIFICATIONS	C1D2, CSA / UL, ATEX, IECEx, CE, FCC, INTL, UKCA
IP RATING	IP65 - ALL SIDES
BODY	FULLY SEALED CHASSIS

MECHANICAL

MOUNTING	CHAIN, PANEL AND WALL VESA MOUNT 200 x 100 mm 100 x 100 mm 75 x 75 mm
WEIGHT	6 KG - 13.2 LBS
DIMENSIONS	16.6" x 11.5 x 2.58" 42.2 x 29.2 x 6.57 cm
CONSTRUCTION	ALUMINUM ANODIZED ALLOY FRAME

MODEL NUMBERS

STD MDL# ROUGHWD C1Z2 MDL# M-ROUGHWD
IECEx MDL# IEC-ROUGHWD



3 YEAR
BUMPER TO BUMPER
PRODUCT WARRANTY

ACURA EMBEDDED SYSTEMS INC.

#101 - 17825 64 AVE, SURREY,
BC - V3S 1Z3 CANADA

13656 BRETON RIDGE ST,
HOUSTON, TEXAS, USA

HARBOROUGH INNOVATION CENTRE,
AIRFIELD BUSINESS PARK, LEICESTER ROAD,
MARKET HARBOROUGH - LE16 7WB, UK

WWW.ACURAEMBEDDED.COM

TOLL-FREE: 1-866-502-9666

EMAIL: CONTACT@ACURAEMBEDDED.COM

